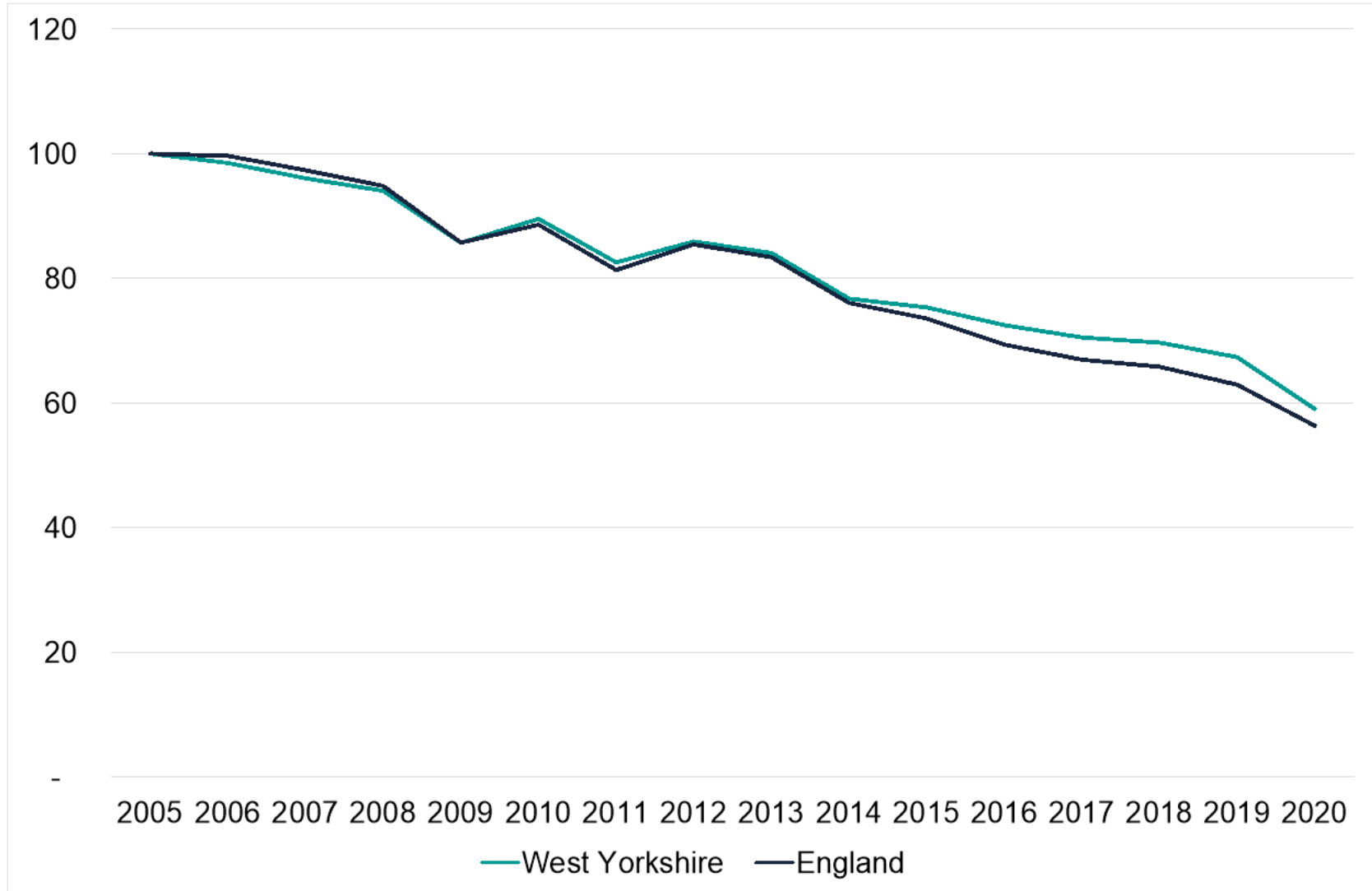




APPENDIX 1: SUMMARY OF PERFORMANCE AGAINST STATE OF THE REGION INDICATORS: CLIMATE, ENERGY AND ENVIRONMENT COMMITTEE

Emissions fell sharply during 2020, reflecting the impact of the pandemic

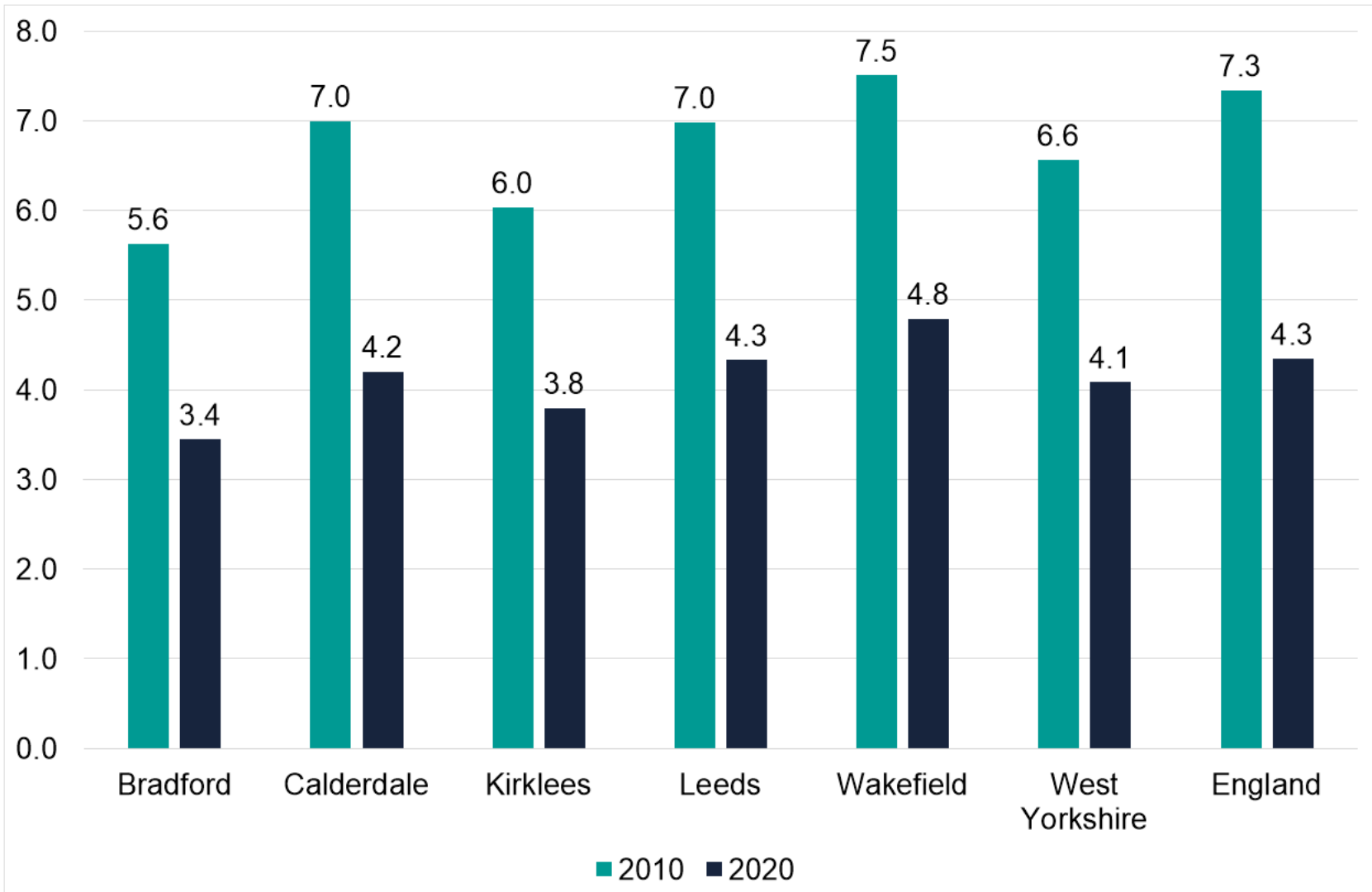
Figure: Trend in carbon dioxide emissions, index (2005 = 100)



Source: UK local authority and regional greenhouse gas emissions national statistics, 2005 to 2020, BEIS

West Yorkshire has lower emissions per capita than the national average

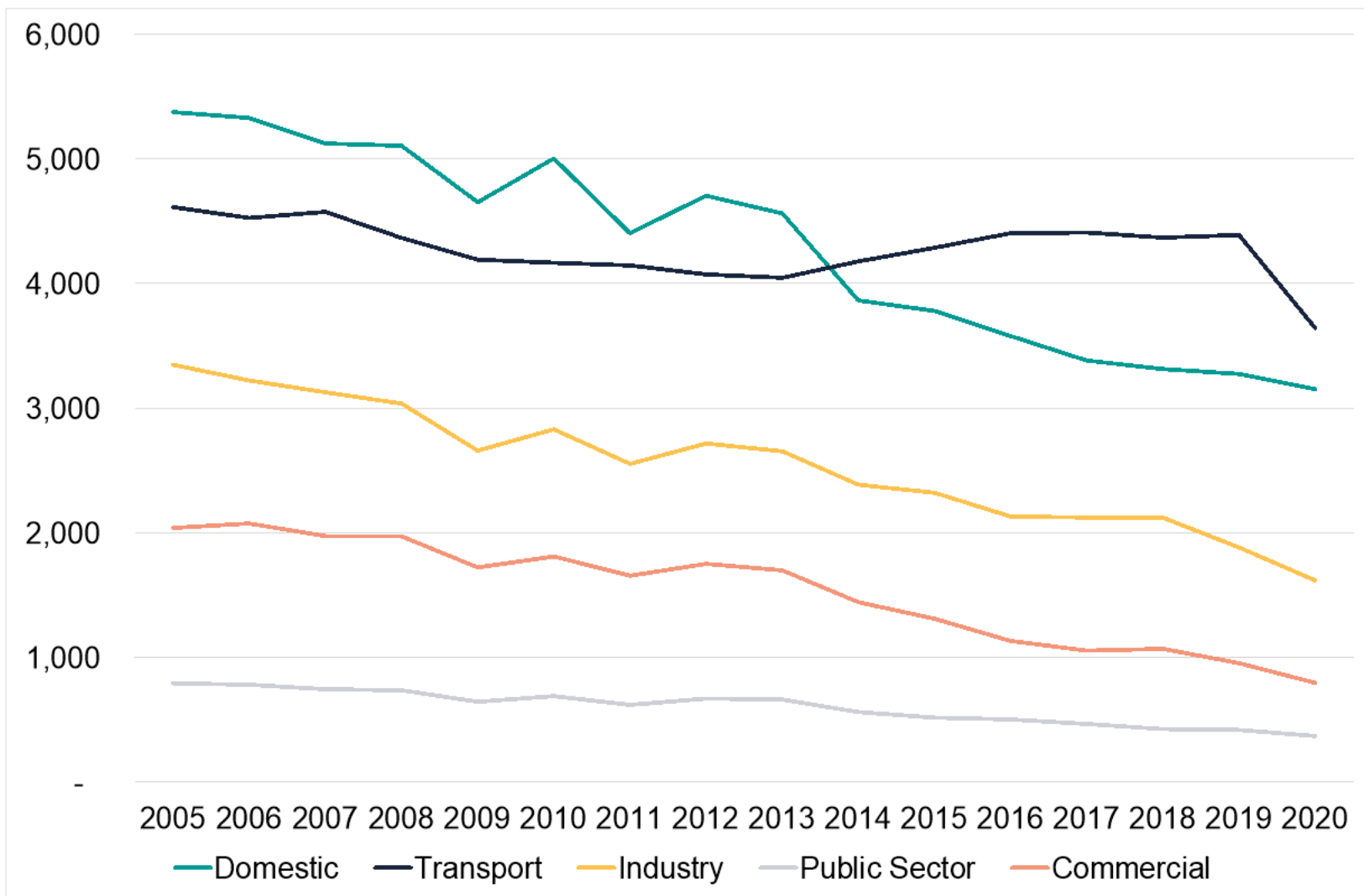
Figure: Per capita carbon dioxide emissions (tonnes CO2 per resident)



Source: UK local authority and regional greenhouse gas emissions national statistics, 2005 to 2020, BEIS

All sectors of the economy saw an emissions reduction, including a sharp fall for transport

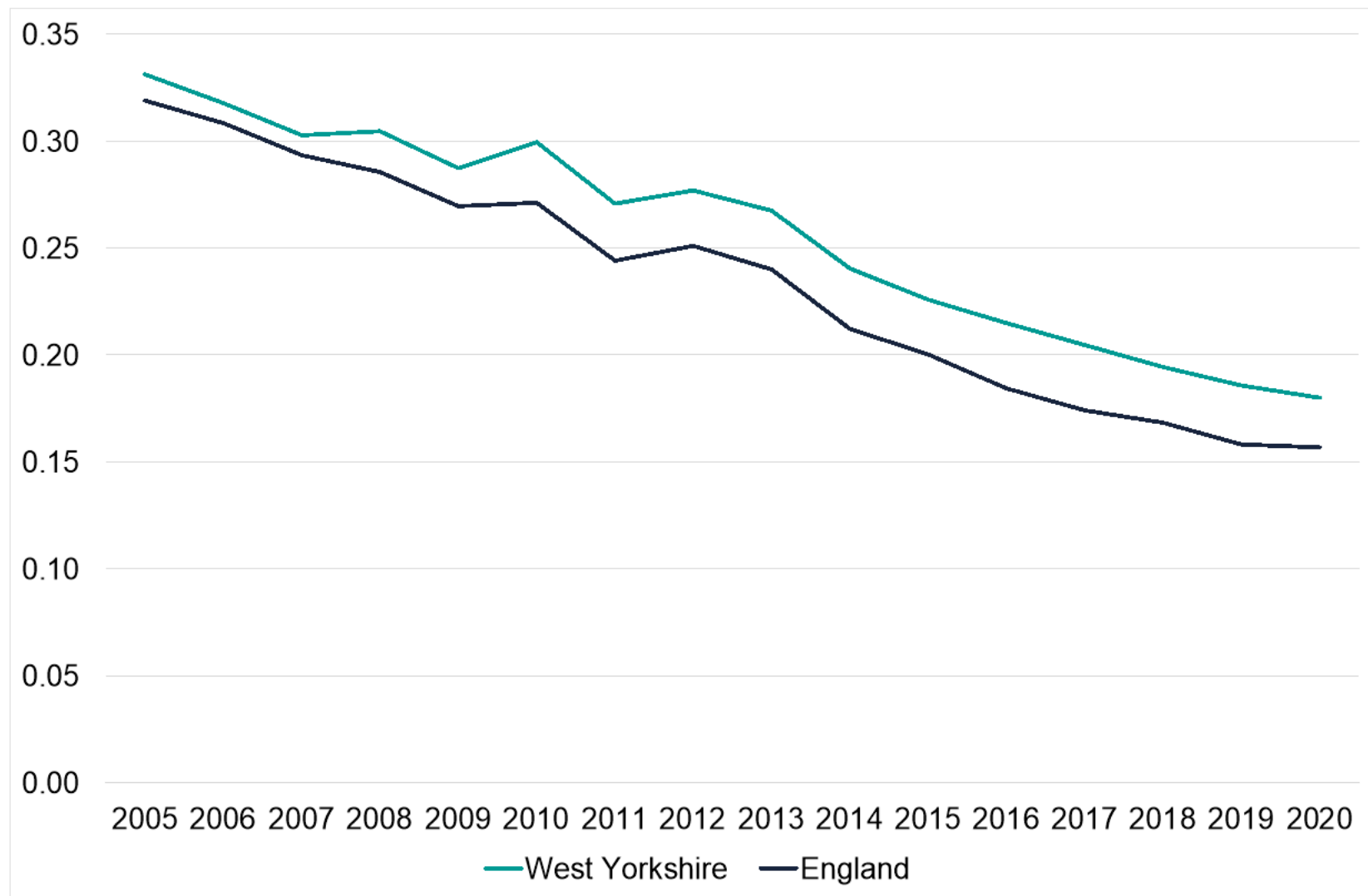
Figure: Trend in carbon dioxide emissions by sector, (ktCO₂), West Yorkshire



Source: UK local authority and regional greenhouse gas emissions national statistics, 2005 to 2020, BEIS

West Yorkshire narrowed the gap with the national average on emissions intensity in 2020

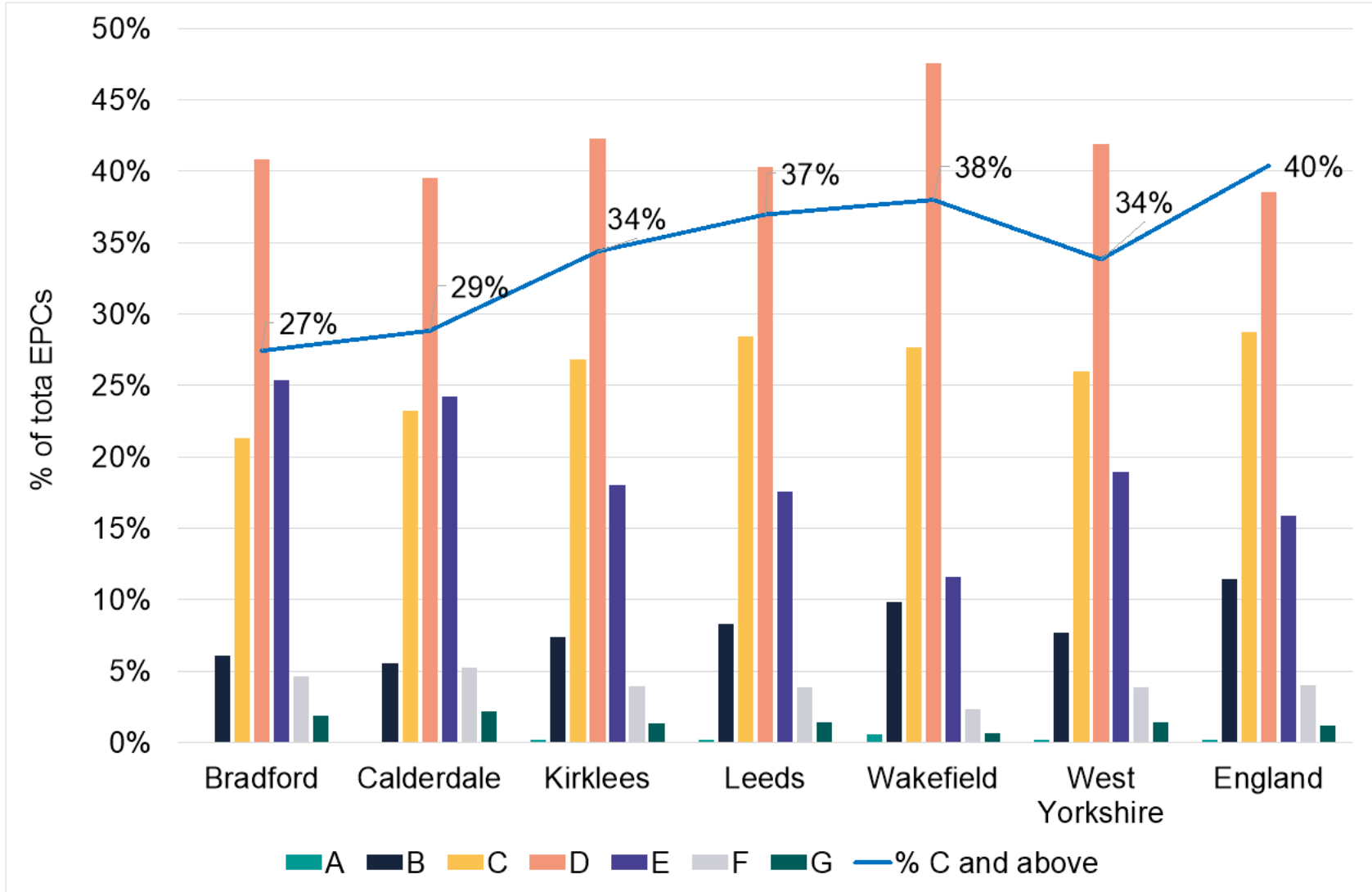
Figure: Trend in carbon dioxide emissions intensity (ktCO₂ per £m gross value added)



Source: UK local authority and regional greenhouse gas emissions national statistics, 2005 to 2020, BEIS

West Yorkshire dwellings with an EPC are less likely to have an energy efficiency rating of C or above compared to national average

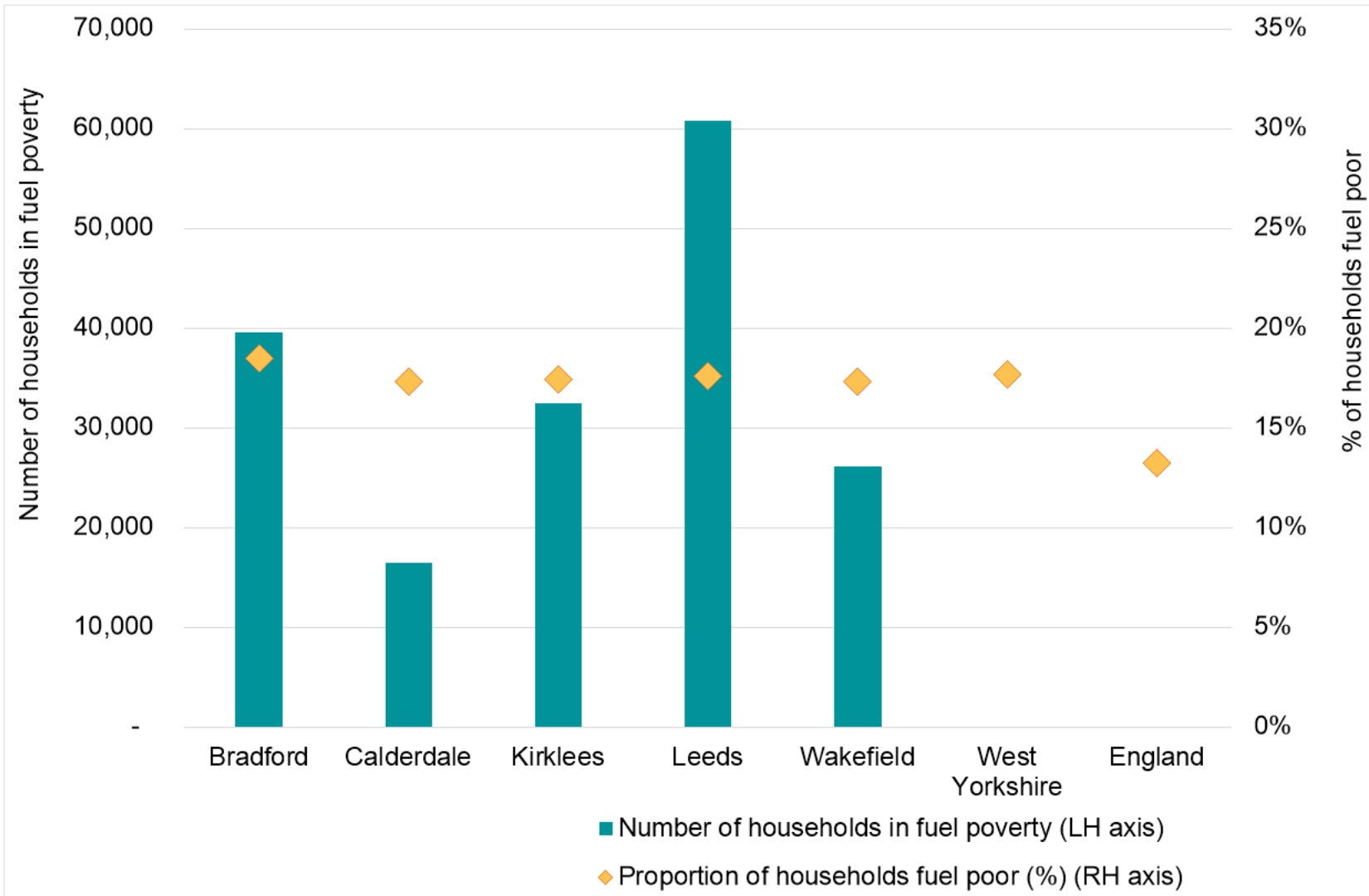
Figure: Profile of Energy Performance Certificates by local authority and Energy Efficiency Rating



Source: Energy Performance Certificate data, Department for Levelling Up, Housing and Communities

18% of households in West Yorkshire are in fuel poverty, a slight increase on the previous year

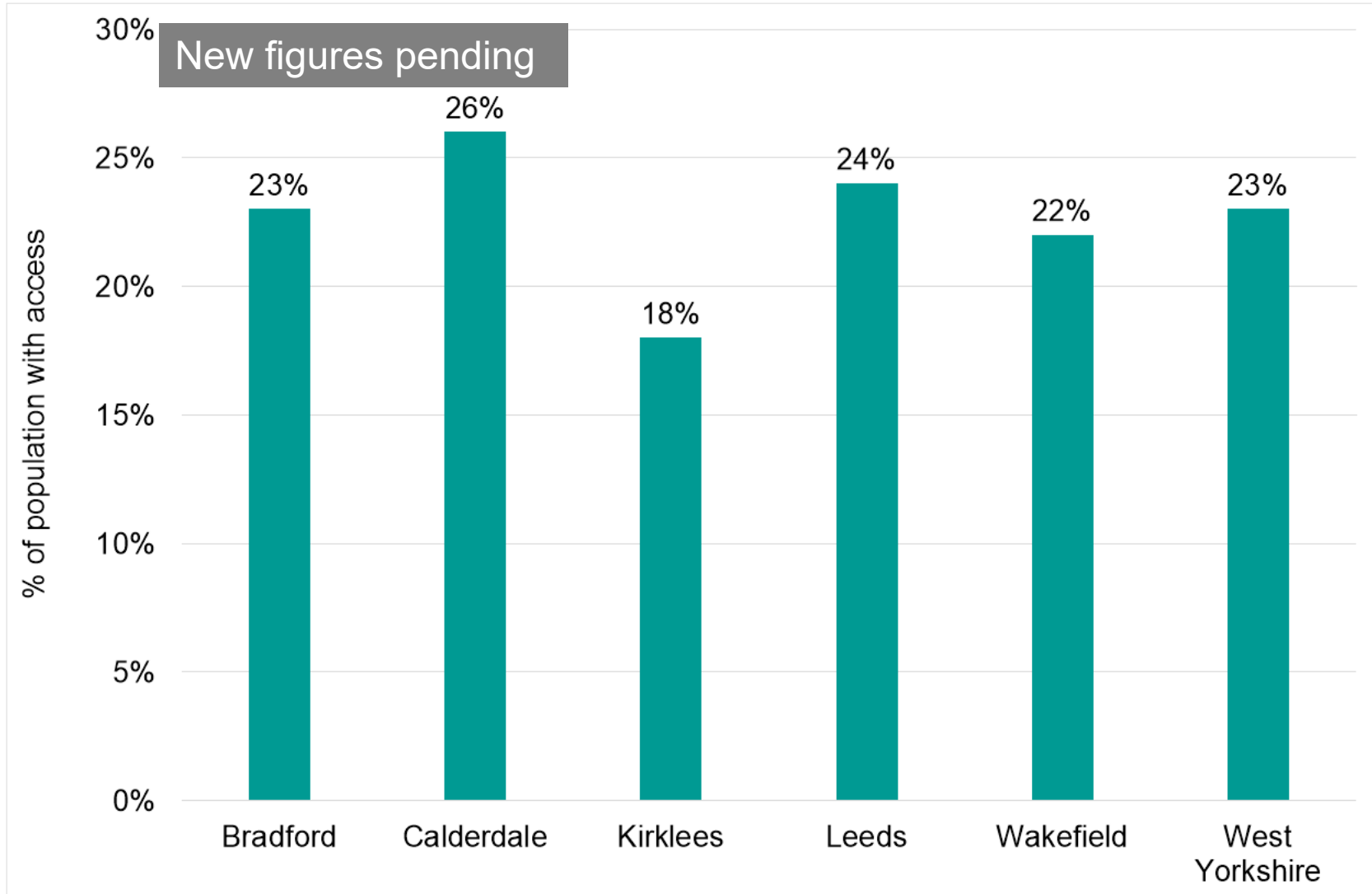
Figure: Number and proportion of households in fuel poverty, 2020



Source: Sub-regional fuel poverty statistics, BEIS

Just under a quarter of the region's population have easy access to local natural greenspace

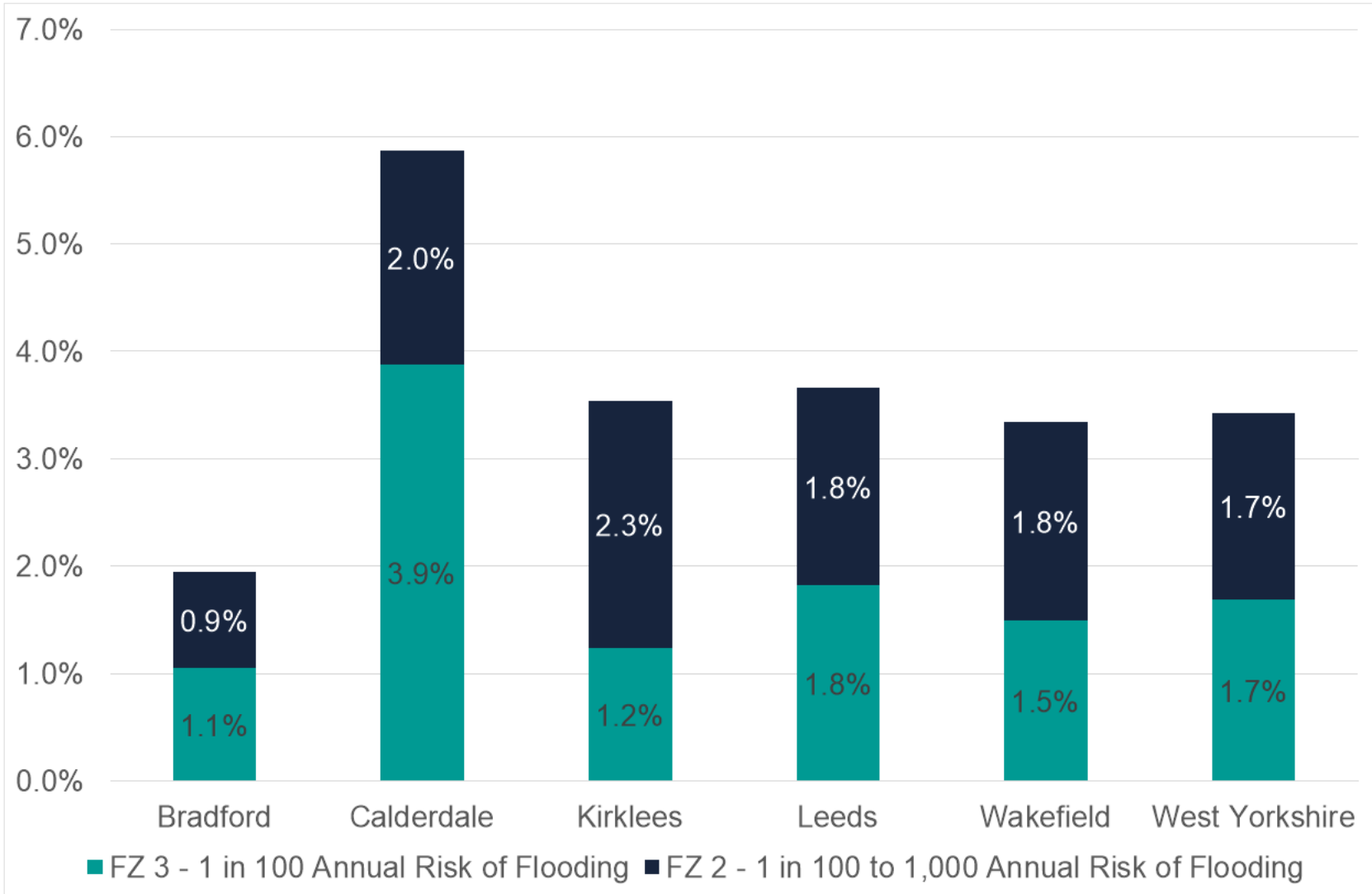
Figure: Proportion of population with easy access to local natural greenspace, 2021



Source: Natural England 2021, ONS Mid-Year Population Estimates

3% of residential properties in West Yorkshire fall within a flood zone, rising to more than 6% in Calderdale

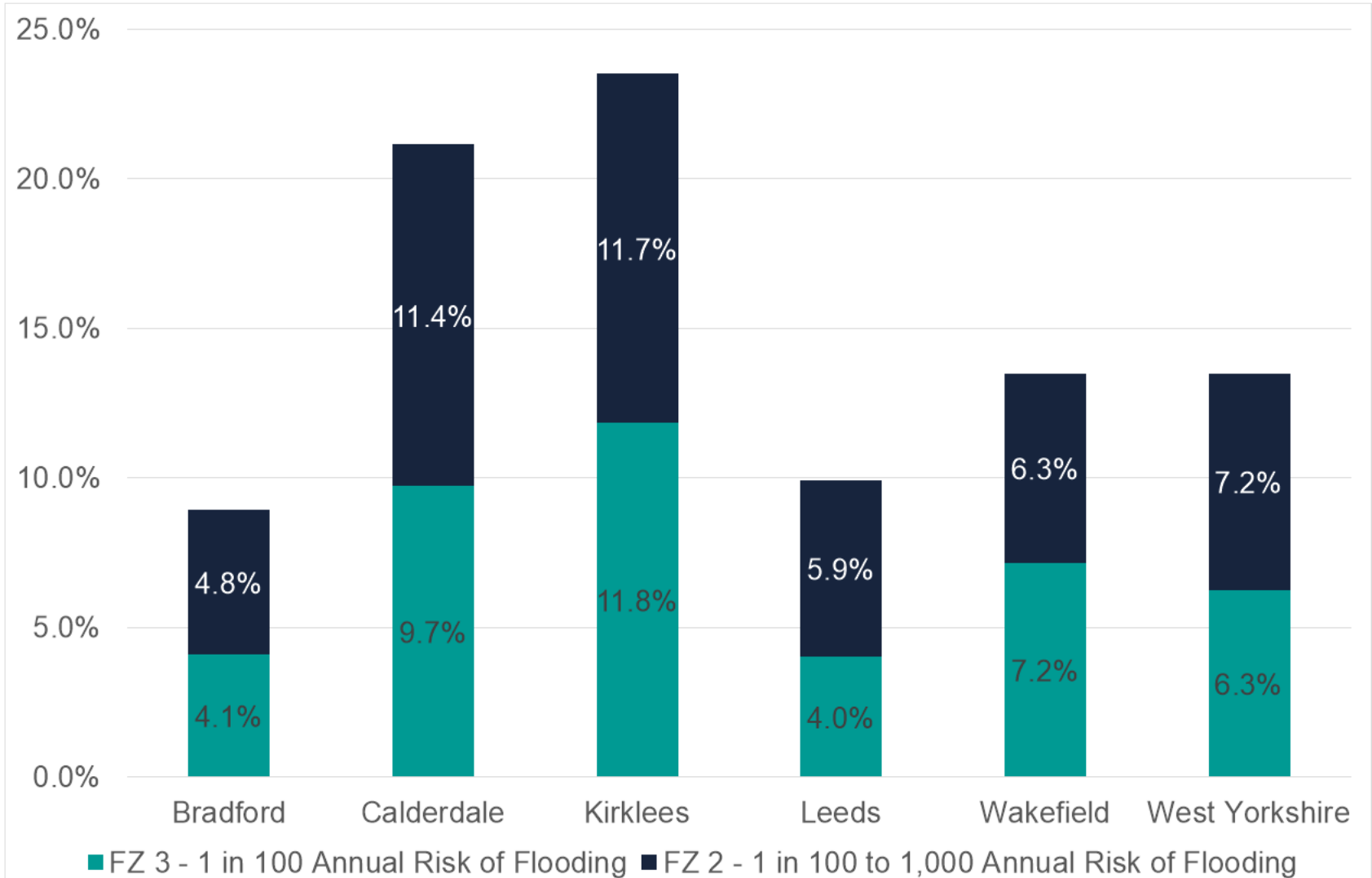
Figure: Proportion of residential properties in flood zones



Source: Environmental Agency, ONS Mid-Year Population Estimates

13% of commercial properties in West Yorkshire fall within a flood zone, rising to 24% in Kirklees

Figure: Proportion of commercial properties in flood zones



Source: Environmental Agency, ONS Mid-Year Population Estimates